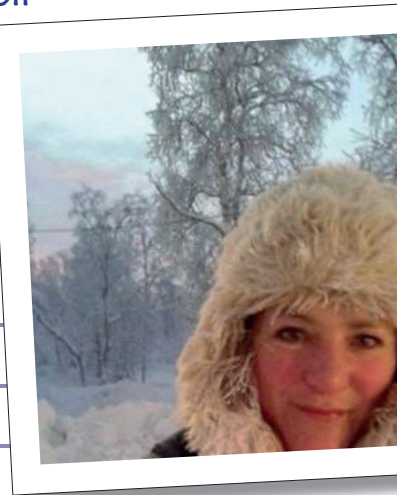


WORKSHOP - Inspired by the ARCTIC - Collaborative Construction

ARTIST - Kate Munro

YEAR GROUP - Key Stage 2 and 3



DESCRIPTION

Inspired by indigenous Arctic people's resourcefulness, resilience, and the creative use of the materials available to them, pupils will work collaboratively to construct (and deconstruct, and reconstruct) a sculptural form using a large 'kit of parts'. Pupils will be encouraged to think about our materialistic throw-away culture, and instead to consider the possibility of repairing and reassembling broken or damaged possessions, and the value that this may bring to them. Kate will support the children to join the materials together without glue or tape, and to explore their craft skills to beautify the object they make too. Pupils can take photos and make drawings of their sculpture, but will not be able to take this away.

SKILLS AND THEMATIC LINKS Collaboration, creativity, joining materials.

Environment, weather, climate change, materials, sustainability.

LOCATION Permanent Collection galleries, then outside (or Studio)

PRICES Half day £150 (or £250 with Studio). Recommended as 1x 2 hour session, but could be condensed to 2x repeated 1 hour sessions. Option to extend to a full day.

NOTES Each session accommodates up to 30 students.

Times are typically 10-12:00 and 12:30-14:30pm.

AVAILABILITY This workshop is usually only available on Thursdays and Fridays.

