

Pablo Picasso: The Legacy of Youth

12 March – 17 July 2022

Sainsbury Centre for Visual Arts, University of East Anglia, Norwich, NR4 7TJ

List of objects proposed for protection under Part 6 of the Tribunals, Courts and Enforcement Act 2007 (protection of cultural objects on loan).

The Artist's Father, Joaquim Mir, Carles Casagemas and various caricatures, Pablo Picasso, 1899-1900

MPB110590

Conté crayon on paper

Unframed: h. 409 x w. 320 mm, Framed: h. 630 x w. 530 mm

Lent by Museu Picasso Barcelona, Montcada 15, 08003, Barcelona

Provenance:

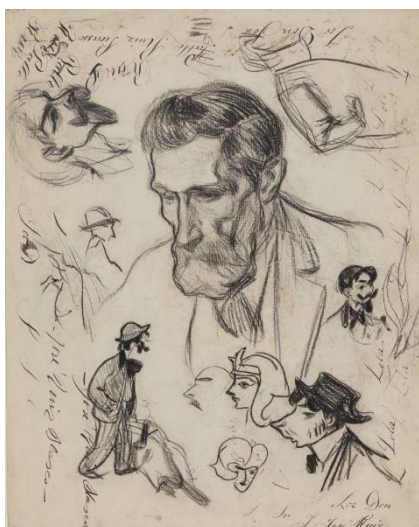
Gift of Pablo Picasso to the Museu Picasso Barcelona, 1970. Previously held by Picasso's family in Barcelona (mother, sister and nephews).

Ownership between 1933–1945: The artist.

Publications:

Maria-Teresa Ocaña, *Picasso: The development of a genius 1890–1904: drawings in the Museu Picasso of Barcelona* (Barcelona: Museu Picasso, 1997), p.150.

Valeriano Bozal et al., *Picasso: from caricature to metamorphosis of style* (Aldershot: Lund Humphries, 2003), p.32.



Various female figures and other sketches, Pablo Picasso, 1899-1900



MPB110275

Pen and ink, and Conté crayon on paper

Unframed: h. 173 x w. 128 mm, Framed: h. 530 x w. 430 mm

Lent by Museu Picasso Barcelona, Montcada 15, 08003, Barcelona

Provenance:

Gift of Pablo Picasso to the Museu Picasso Barcelona, 1970. Previously held by Picasso's family in Barcelona (mother, sister and nephews).

Ownership between 1933–1945: The artist.

Sick woman in bed, Pablo Picasso, 1899-1900



MPB110075

Oil on canvas

Unframed: h. 260 x w. 335 mm, Framed: h. 460 x w. 535 x d. 30 mm

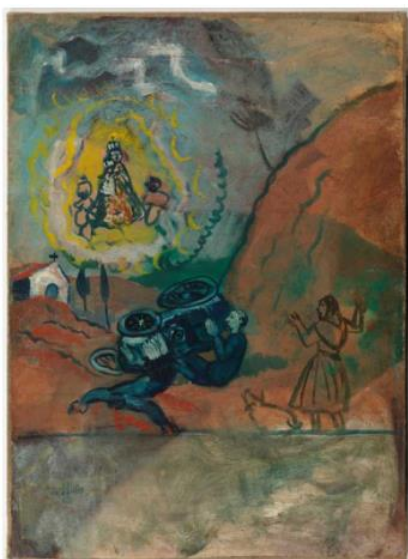
Lent by Museu Picasso Barcelona, Montcada 15, 08003, Barcelona

Provenance:

Gift of Pablo Picasso to the Museu Picasso Barcelona, 1970. Previously held by Picasso's family in Barcelona (mother, sister and nephews).

Ownership between 1933–1945: The artist.

Parody of “Ex voto”, Pablo Picasso, c. 1901



MPB110055R

Oil on canvas

Unframed: h. 566 x w. 408 mm, Framed: h. 655 x w. 500
x d. 60 mm

Lent by Museu Picasso Barcelona, Montcada 15, 08003,
Barcelona

Provenance:

Gift of Pablo Picasso to the Museu Picasso Barcelona,
1970. Previously held by Picasso's family in Barcelona
(mother, sister and nephews).

Ownership between 1933–1945: The artist.

Academic Study, Pablo Picasso, 1896

MPB110874



Charcoal and Conté crayon on laid paper

Unframed: h. 600 x w. 474 mm, Framed: h. 830 x w. 630 mm

Lent by Museu Picasso Barcelona, Montcada 15, 08003, Barcelona

Provenance:

Gift of Pablo Picasso to the Museu Picasso Barcelona, 1970. Previously held by Picasso's family in Barcelona (mother, sister and nephews).

Ownership between 1933–1945: The artist.

Publications:

Maria-Teresa Ocaña, *Picasso: The development of a genius 1890–1904: drawings in the Museu Picasso of Barcelona* (Barcelona: Museu Picasso, 1997), p.72.

Joseph Palau i Fabre, *Picasso: The early years 1881–1907* (New York: Rizzoli, 1981), p.95.

Study of Fernande Olivier, Pablo Picasso, 1909

23460

Conté on paper

630 x 455 mm

Lent by The Albertina Museum, Albertinaplatz 1, 1010, Vienna

Provenance:

Acquired by the Albertina, Vienna in 1923 from Galerie Würthle, Vienna

Ownership between 1933–1945: Albertina, Vienna.

Publications:

Walter Koschatzky, Pablo Picasso: Gouachen, Zeichnungen, Radierungen, Lithographien (Munich, Galerie Artcurial, 1986), Nr. 68.

Jeffrey S Weiss, Valerie J Fletcher and Kathryn A Tuma, Picasso: the cubist portraits of Fernande Olivier (Washington and Dallas: National Gallery of Art and Princeton University Press, 2003), No. 69.

Klaus Albrecht Schröder and Brigitte Willinger, Schiele bis Giacometti (Vienna: Albertina, 2003).

Klaus Albrecht Schröder, Christine Ekelhart and Sigrid Achenbach, Goya bis Picasso (Vienna: Albertina, 2005), No. 133.

Klaus Albrecht Schröder and Susanne Berchtold, Monet bis Picasso (Vienna: Albertina, 2007), No. 77.

Klaus Albrecht Schröder, The Albertina Museum (London: Scala, 2017), pp.76–77.





Töpfe und Zitrone, Pablo Picasso, 1907

GE96DL

Oil on canvas

Unframed: h. 550 x w. 460 mm, Framed: h. 820 x w. 730 x d. 65 mm

Lent by The Albertina Museum, Albertinaplatz 1, 1010, Vienna

Provenance:

1911–1957, Clive Bell, Sussex (1881–1964). Bought from Daniel-Henry Kahnweiler, Paris 1911. Sold in 1957.

Charles Kearly, England (1962-1976) (Purchase via Sotheby's, London (5.7.1962, lot 243.)

Sotheby's, London (30.6.1976, lot 59. – not sold)

Galerie Beyeler, Basel (via Sotheby's Parke Bernet, London (29.6.1983, lot 44))

Acquired by Rita and Herbert Batliner, Vaduz, Liechtenstein, date unknown.

Donated to the Albertina Museum in 2007 by Rita and Herbert Batliner.

Ownership between 1933–1945: Clive Bell, London and Charleston, UK

Publications:

Clive Bell, *Art*, 5th edn (New York: Frederick A. Stokes Company, 1914), p.251, no. 6.

Ausstellungen (laut Koella/Billeter): Picasso, *rétrospective*, Galerie Georges Petit, Paris 1932, No. 48.

Kunsthau Zürich, Picasso (Zurich: Das Kunshaus, 1932), No. 44.

Christian Zervos, *Pablo Picasso. 2,1 Oeuvres de 1906 a 1912* (Paris: Cahiers d'art, 1942), No. 32.

Roland Penrose, *Picasso* (London: Arts Council of Great Britain, 1960), No. 35

Pierre Daix, *Le Cubisme de Picasso* (Neuchâtel: Ides et Caldendes, 1979), No. 65.

William Stanley Rubin, *Picasso and Braque: Pioneering Cubism* (New York: The Museum of Modern Art, 1989), No. 2, p.74.

Judith Cousins and William Stanley Rubin, *Picasso und Braque, Die Geburt des Kubismus* (Munich: Prestel, 1990), No. 6.

William Rubin, Helene Seckel-Klein and Judith Cousins, *Les Demoiselles d'Avignon special issue* (New York: Abrams, 1994), p.47.

Pablo Picasso: The Legacy of Youth, 12 March – 17 July 2022. Sainsbury Centre for Visual Arts. List of objects proposed for protection under Part 6 of the Tribunals, Courts and Enforcement Act 2007 (protection of cultural objects on loan).

Klaus Albrecht Schröder and Felix Billeter, *Das Auge des Sammlers – Monet bis Picasso* (Vienna: Kunstforum Wien, 1998), p.104, cat.87.

Rudolf Koella and Felix Billeter, *Verborgene Meisterwerke* (Vienna: ChristianBrandstatter, 2005), p.159.

Klaus Albrecht Schröder and Susanne Berchtold, *Monet bis Picasso* (Vienna: Albertina, 2007), p.136, cat.76.

James Beechey and Chris Stephens, *Picasso & Modern British Art* (London: Tate, 2012), p.55, cat.2.

Klaus Albrecht Schröder, *The Albertina Museum* (London: Scala, 2017), pp.44–45.

Mark Hussey, *Clive Bell and the Making of Modernism: A Biography* (London: Bloomsbury Publishing, 2021).



Corrida [Bullfight], Pablo Picasso, 1894

MP401

Ink and graphite pencil on paper

Unframed: h. 126 x w. 193 mm
Framed: h. 405 x w. 530 mm

Lent by Musée national Picasso-Paris, 5 Rue de Thorigny, 75003 Paris, France

Pablo Picasso: The Legacy of Youth, 12 March – 17 July 2022. Sainsbury Centre for Visual Arts. List of objects proposed for protection under Part 6 of the Tribunals, Courts and Enforcement Act 2007 (protection of cultural objects on loan).

Provenance:

Donated to the Musée national Picasso-Paris in 1979 by acceptance in lieu from Picasso's heirs.

Ownership between 1933 – 1945: The artist.

Publications:

Juan-Eduardo Cirlot and Juan Ainaud de Lasarte, *Picasso: Birth of a genius* (Paris: Paul Elek, 1972), ill. p.54.

John Golding, Roland Penrose and Dominique Bozo, *Picasso's Picassos* (London: Arts Council of Great Britain, 1981).

Jürgen Glaesemer and Marilyn McCully, *Der Junge Picasso : Frühwerk und Blaue Periode* (Bern: Kunstmuseum Bern, 1984).

Picasso, *jeunesse et genèse: dessin, 1893–1905* (Paris and Nantes: Reunion des musees nationaux and Musee des beaux-arts, 1991), pp.151–153.

Picasso: *toros y toreros* (Paris: Réunion des musées nationaux, 1993), pp.248–251, cat. 4, ill. p.84.

Marie-Noëlle Delorme, *Picasso: la passion du dessin* (Paris: Éditions de la Réunion des musées nationaux, 2005), p.68.

Marie-Laure Bernadac and Paule du Bouchet, Picasso:
le sage et le fou (Paris: Gallimard, 2007), p.17.

Pablo Picasso: The Legacy of Youth, 12 March – 17 July 2022. Sainsbury Centre for Visual Arts. List of objects proposed for protection under Part 6 of the Tribunals, Courts and Enforcement Act 2007 (protection of cultural objects on loan).

Figures en noir sur une place plantée d'arbres [Figures in black on a square planted with trees], Pablo Picasso, 1899-1900



MP422

Black pencil on paper

h. 165 x w. 220 mm

Lent by Musée national Picasso-Paris, 5 Rue de Thorigny, 75003 Paris, France

Provenance:

Donated to the Musée national Picasso-Paris in 1979 by acceptance in lieu from Picasso's heirs.

Ownership between 1933–1945: The artist.

Publications:

John Golding, Roland Penrose and Dominique Bozo, *Picasso's Picassos* (London: Arts Council of Great Britain, 1981).

Maisons [Houses], Pablo Picasso, 1909

MP632

Pen and ink on laid paper

h. 171 x w. 131 mm

Lent by Musée national Picasso-Paris, 5 Rue de Thorigny, 75003 Paris, France



Provenance:

Donated to the Musée national Picasso-Paris in 1979 by acceptance in lieu from Picasso's heirs.

Ownership between 1933–1945: The artist.

Publications:

Dominique Bozo and Michele Richet, *Picasso: oeuvres reçues en paiement des droits de succession* (Paris: Spadem, 1979), p.257.

Georges Boudaille, *Picasso dessinateur* (Paris: Cercle d'Art, 1987), p.13.

Hélène Seckel-Klein, *Pablo Picasso und seine Sammlung* (Munich: Hirmer, 1998), p.303.

John Richardson and Marilyn McCully, *A life of Picasso [volume II], The cubist rebel, 1907–1916* (New York: Alfred A. Knopf, 2012), p.125.

Provenance:

Donated to the Musée national Picasso-Paris in 1979 by acceptance in lieu from Picasso's heirs.

Ownership between 1933–1945: The artist.

Publications:

Dominique Bozo and Michele Richet, *Picasso: oeuvres reçues en paiement des droits de succession* (Paris: Spadem, 1979), p.88.

Dominique Bozo, *Musée Picasso, Catalogue sommaire des collections* (Paris: Musees Nationaux, 1985), p.133.

Werner Spies and Christine Piot, *Picasso sculpteur* (Paris: Centre Pompidou, 2000), p.94.

Anne Baldassari, *Picasso: Papiers Journaux* (Paris: Tallandier, 2003), pp.235–239.

Angela Schneider and Anke Daemgen, *Der private Picasso: le Musée Picasso à Berlin* (Munich: Prestel, 2005), p.90.

Ann Temkin, Anne Umland and Virginie Perdrisot, *Picasso Sculpture* (New York: Museum of Modern Art, 2005), p.91.

Anne Baldassari, *La colección del Museo nacional Picasso, París* (Madrid and Barcelona: Museo Nacional Centro de Arte Reina Sofia and Lunwerg Editores, 2008).

Cécile Godefroy and Virginie Perdrisot, *Picasso: Sculptures* (Paris and Brussels: Musée National Picasso-Paris and Palais des beaux-arts, 2016), p.94.

Heinz Widauer, *Ways of Pointillism: Seurat, Signac, Van Gogh* (Munich: Hirmer, 2016), p.243.



Verre et Journal [Glass and Newspaper], Pablo Picasso, 1914

MP47

Wood pencil and oil paint

Unframed: h. 154 x w. 175 x d. 30 mm, Framed: h. 460 x w. 560 x d. 90 mm

Lent by Musée national Picasso-Paris, 5 Rue de Thorigny, 75003 Paris, France

KM 102.414

Chalk and paint on paper

Framed: h. 425 x w. 600 mm

Lent by Kröller Müller Museum, Houtkampweg 6, 6731 AW Otterlo, Netherlands

Provenance:

Purchased by Helene Kröller-Müller from an unknown vendor, Paris, 1915.

Presented by Helene Kröller-Müller to the State of the Netherlands in 1935 for the Kröller Müller Museum.

Ownership between 1933 – 1945: Helene Kröller-Müller, then Kröller Müller Museum, Netherlands.



Loge de balcon [Theatre Balcony], Pablo Picasso, 1900

Tête de jeune femme (la Madrilèna) [Portrait of a Young Woman (The Madrilénian)], Pablo Picasso, c. 1901

KM 108.153

Oil on panel

Framed: h. 705 x w. 525 x d. 50 mm

Lent by Kröller Müller Museum, Houtkampweg 6, 6731 AW Otterlo, Netherlands

Provenance:

Purchased by Helene Kröller-Müller from Hôtel Drouot (auction house), Paris, 1930.

Presented by Helene Kröller-Müller to the State of the Netherlands in 1935 for the Kröller Müller Museum.

Ownership between 1933 – 1945: Helene Kröller-Müller, then Kröller Müller Museum, Netherlands.



Publications:

Joseph Palau I Fabre, Picasso: The early years 1881–1907 (New York: Rizzolli, 1981), p.245.



Verre et bouteilles [Glass and bottles], Juan Gris, 1912

KM 100.730

Oil on canvas

Framed: h. 520 x w. 432 x d. 35 mm

Lent by Kröller Müller Museum, Houtkampweg 6, 6731 AW Otterlo, Netherlands

Provenance:

Purchased by Helene Kröller-Müller from Galerie L'Effort Moderne (Léonce Rosenberg), Paris, 1927.

Presented by Helene Kröller-Müller to the State of the Netherlands in 1935 for the Kröller Müller Museum.

Ownership between 1933 – 1945: Helene Kröller-Müller, then Kröller Müller Museum, Netherlands.

KM 103.656-7
KM 103.656-8
KM 103.656-9
KM 106.028
KM 110.565

Portfolio containing 22 lithographs on paper

h. 440 × w. 320 mm

Lent by Kröller Müller Museum, Houtkampweg 6, 6731
AW Otterlo, Netherlands

Provenance:

Presented by Helene Kröller-Müller to the State of the
Netherlands in 1935 for the Kröller Müller Museum.

Ownership between 1933–1945: Helene Kröller-Müller,
then the Kröller Müller Museum.

Publications:

Wolfgang Wittrock, *Toulouse-Lautrec. The Complete
Prints, I–II* (London: 1985)

Loys Delteil, *Le Peintre-Graveur Illustré X–XI, H. de
Toulouse-Lautrec* (Paris: 1920)

Jean Adhémar, *Toulouse-Lautrec. Lithographies-Pointes
sèches*, (Paris: 1965)

Götz Adriani, *Toulouse-Lautrec. Das Gesamte
Graphische Werk* (Cologne: 1976)

Götz Adriani, *Toulouse-Lautrec. The Complete Graphic
Works. Catalogue Raisonné*. English translation.
(London: Thames and Hudson, 1988), pp.49-57.



**Le Café Concert, Henri de
Toulouse Lautrec, Henri-
Gabriel Ibels and Georges
Montorgueil, 1893**

KM 100.376
KM 101.025
KM 102.227
KM 103.309
KM 103.656-10
KM 103.656-11
KM 103.656-12
KM 103.656-13
KM 103.656-14
KM 103.656-15
KM 103.656-16
KM 103.656-17
KM 103.656-2
KM 103.656-3
KM 103.656-4
KM 103.656-5
KM 103.656-6



**Portrait de l'artiste assis,
Pablo Picasso, 1904**

Ink, wash and gouache on
paper

Lent by a Private Collector

Provenance:

Sebastiá Junyent (1865–
1908), Barcelona, 1904
(acquired from the artist)

Unknown

Sam Salz (1894–1981), New
York.

Private Collection, Oklahoma

Acquavella Galleries, New
York

Private Collection (acquired
from Acquavella Galleries in
1986)

Acquired by the present
owner by descent from the
above.

Ownership between 1933–
1945: unknown

Publications:

Pablo Picasso: The Legacy of Youth, 12 March – 17 July 2022. Sainsbury Centre for Visual Arts. List of objects proposed for protection under Part 6 of the Tribunals, Courts and Enforcement Act 2007 (protection of cultural objects on loan).

Jaime Sabartés, *Picasso: Documents Iconographiques* (Geneva: P. Cailler, 1954), pl. 86.

Pierre Daix and George Boudaille, *Picasso: The Blue and Rose Periods: A Catalogue of the Paintings 1900–1906* (Greenwich, CT: New York Graphic Society, 1967), no. D. XI. 28, p.252.

Alberto Moravia, Paolo Lecaldano, and Pierre Daix, *L'Opera Completa di Picasso: Blu e Rosa* (Milan: Rizzoli, 1968), no. 152, p.99.

Christian Zervos, *Pablo Picasso: Supplément aux années 1903–06* (Paris: Cahiers d'Art, 1970), vol. 22, no. 113, p.37.

Alberto Moravia, Paolo Lecaldano, and Pierre Daix, *L'Opera Completa di Picasso: Blu e Rosa* (Milan: Rizzoli, 1971), no. 152, p.99.

William Rubin, ed., *Pablo Picasso: A Retrospective* (New York: Museum of Modern Art, 1980), p.57.

Alberto Moravia, Paolo Lecaldano, and Pierre Daix, *Tout l'Oeuvre Peint de Picasso: Périodes Bleue et Rose* (Paris: Flammarion, 1980), no. 152, p.99.

Josep Palau i Fabre, *Picasso: The Early Years 1881–1907* (New York: Rizzoli, 1981), no. 1010, p.393, illustrated; no. 1010, p.544.

Josep Palau i Fabre, *Picasso: The Early Years 1881–1907* (Barcelona: Ediciones Polígrafa, 1985), no. 1010, p.393, illustrated; no. 1010, p.544.

Denys Sutton and Paolo Lecaldano, *The Complete Paintings of Picasso: Blue and Rose Periods* (New York: Penguin Books, 1987), no. 154, p.99.

Pierre Daix, Georges Boudaille, and Joan Rossetet, *Picasso 1900–1906: Catalogue Raisonné de l'Oeuvre Peint* (Neuchatel: Editions Ides et Calendes, 1988), no. D. XI. 28, p.252.

The Picasso Project, ed.,
Picasso's Paintings,
Watercolors, Drawings and
Sculpture, The Blue Period,
1902—1904 (San Francisco:
Alan Wofsy Fine Arts, 2011),
no. 1904—126, p.225.

Pablo Picasso: The Legacy of Youth, 12 March – 17 July 2022. Sainsbury Centre for Visual Arts. List of objects proposed for protection under Part 6 of the Tribunals, Courts and Enforcement Act 2007 (protection of cultural objects on loan).