

Welcome to the Sainsbury Centre A Visual Story

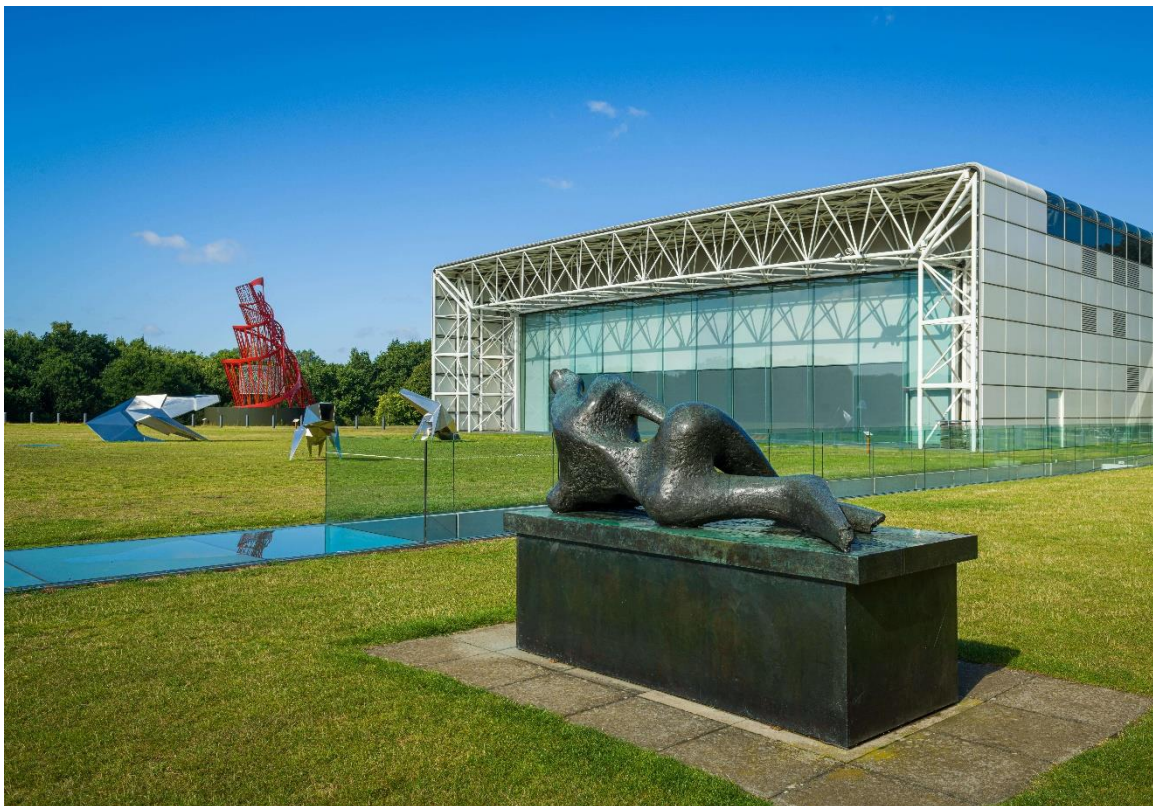


Image Credits: Andy Crouch and Rach Anstey-Sanders



The Sainsbury Centre is a long, white building. It has green, grassy space all around it. The Sainsbury Centre is a gallery. Here, we will see objects from all over the world, made by lots of different people.



We cross the quiet road and come to the entrance of the Sainsbury Centre.
There are glass doors and windows.



If we stand in front of the doors, they will open for us. There are two pairs of
doors. One pair will open, then the other.



We can hear the air conditioning in the Sainsbury Centre making a low humming noise. We can see all the way to the ceiling. There are lifts and stairs to go up and down. It is a big space.

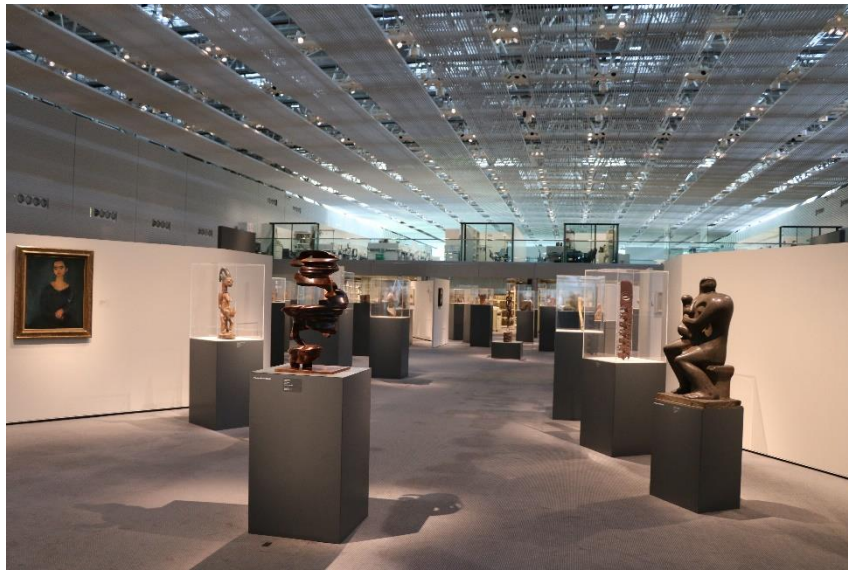


There is a place just inside the front doors with tables and chairs. We can have a snack here, or just sit together.

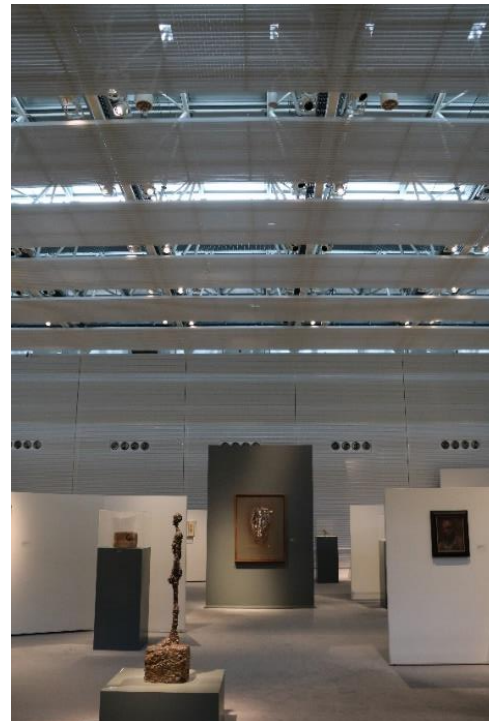


We can go to the reception desk. There may be a short queue to talk to the people at the desk. They can answer questions and show us where to go.

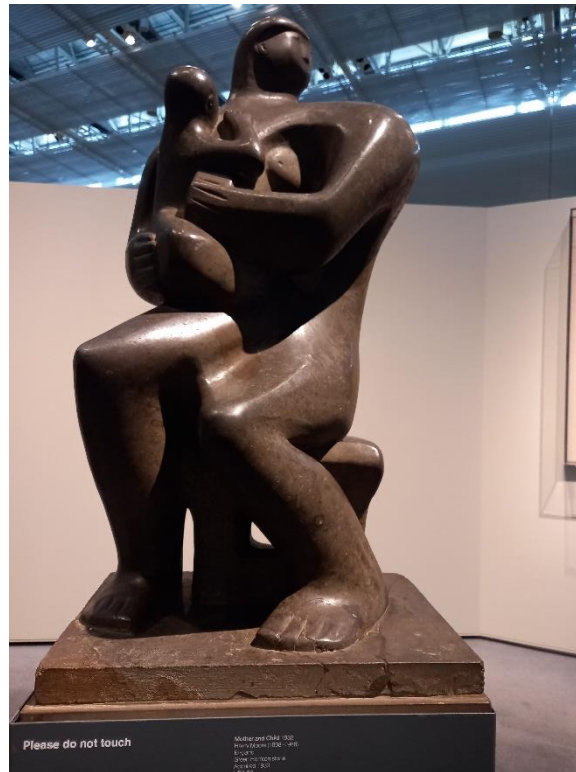




The main floor of the gallery is called the Living Area. Some of the objects here are on grey boxes called plinths. Some of them are in glass boxes called cases. Some of them are hanging in frames.



There are screens in the Living Area. We can walk around them and see the artworks on the other side. We can walk in any direction we like.

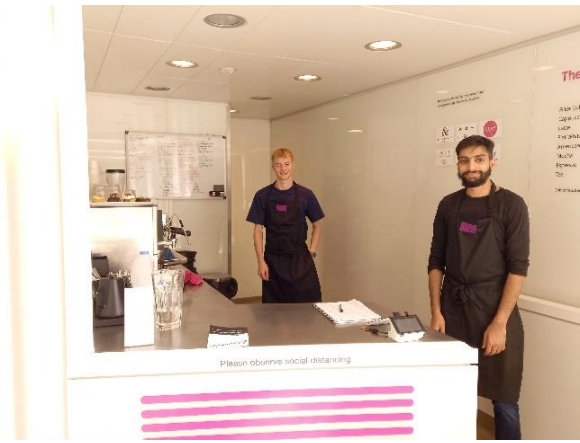


We can look at the objects, but not touch them. This is to protect ourselves - and the things in the gallery - from damage. There are signs to remind us.

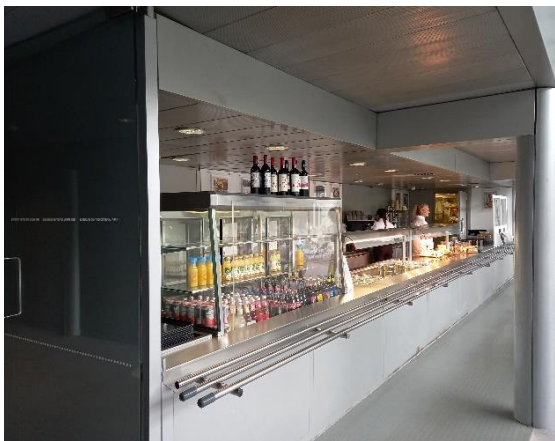


There is a shop at the Sainsbury Centre, behind the reception desk. We can buy books, postcards and other items at the shop.

There are two cafes at the Sainsbury Centre.



This is The Terrace cafe. It is a small cafe in the gallery near the reception desk and the shop. We can buy drinks and snacks here. We can sit at a table with our food and drinks or take them outside.



This is the Modern Life Cafe. It is bigger. There is an enormous window at one end. We can buy sandwiches and other meals here.

We can sit at a table and order our food from a menu. We will need to go over to the till area to order what we would like and pay for it.

The Modern Life Cafe can be very busy. We might hear lots of people eating and talking. We might hear noises and smell food coming from the kitchen.



We can use these toilets. They are next to the entrance of the Sainsbury Centre. They are in small rooms in a corridor.



This is what the toilets look like inside. There are electric hand driers or paper towels to dry our hands.

Outside the Sainsbury Centre is the Sculpture Park which is free to explore.



There are more artworks to see outside in the Sculpture Park. We can go for a walk and look for them. There are free maps to pick up at the reception desk.



Most of the Sculpture Park is in a grassy meadow, with some hills to go up and down. There are some wide gravelly paths and some grassy paths. There are mole hills and rabbit holes to look out for on the ground.



There is a lake in the Sculpture Park. We can go around it on a gravelly path. In some places, it is possible to carefully go right up to the water's edge. There are some benches to sit on around the lake.



There are woods in the Sculpture Park. We can explore the woods and look for wildlife. There are some wide, gravelly pathways.

It can get muddy around the lake and in the woods.