

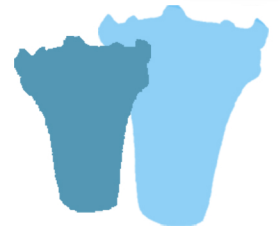
this is one of a  
series of resources  
looking at different  
vessels in the  
Sainsbury Centre's  
Collections

VESSELS



Flame-style  
Deep Bowl

## INVESTIGATE:



### LOOKING

Start by taking a good look at this vessel. Try thinking about it before you read the information about it.

What do you see?

Maybe use these questions to guide you:

- What do you think the vessel is made of?
- How do you think it was formed?
- How did the material become this shape?
- What do you think it was used for?

### THINKING

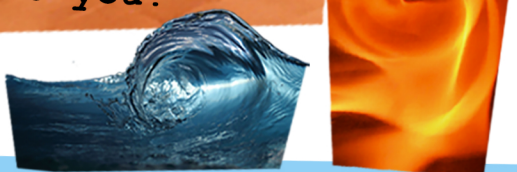
How do you think it was made? ..using tools? machines? ..by hand? ..or computers?

- How might the surface texture have been created?
- What do you think it feels like?

### DISCUSSING

How much do you think the vessel weighs?  
How strong do you think it is?

What could the patterns represent? What do they look like to you?



What might it have contained?

Perhaps answer these questions or ask your own.

Do this individually, in pairs or groups.  
How did you find this?

Do you agree with other people?

What are you most interested in?

What else do you need or want to know?

# SAINSBURY CENTRE

IMAGINE:

Maybe use these questions to guide you:



- If you could put your ear to the vessel, what sound might you hear?
- Do you think it holds any stories?

- What do you think the person who made the flame-style deep bowl was like?
- Where did they live?
- What was their world like?
- What were they thinking about?

A reconstruction of an early Jomon house, in Japan



Japan



1142

1121

These objects were made around the same time as the flame-style deep bowl, in the same part of the world

## INFORMATION:

Each object in the gallery has a label with some Facts and Figures. They highlight what we know, and what we do not.



**Flame-style deep bowl** - this is the Title or Description of the object.  
**Japan** - The Production Place is where the object was made, in as much detail as possible.  
**Middle Jōmon Period (c.2500-1500 BC)** - this is the name of the Historic Period when it was made.  
**Earthenware\*** - the Material the object was made from, perhaps suggesting how it was made too.  
**Acquired 1992** - the date that this vessel was given to, or bought by, the UEA.  
**UEA 1081** - all of the objects in the Sainsbury Centre's collections are given an **Accession Number**. This allows us to keep records about each of them, and helps you to find out more about them online:

[www.sainsburycentre.ac.uk/art-and-objects](http://www.sainsburycentre.ac.uk/art-and-objects)



1081

All of the objects in this resource have their object number near them

\*Find out more about **Earthenware** on the next page

# SAINSBURY CENTRE

## ILLUMINATE:



The Flame-style deep bowl was made in Japan around 4000 years ago, in what we now call the Jōmon period. Jōmon culture lasted more than 14,000 years. The word Jōmon means 'cord-marked', indicating the use of rope or twine in the Jōmon material culture.



Many Jōmon ceramics have been unearthed in riverbeds in mountainous, and often snowy northern Japan. This area was thought to be the centre of Jōmon life.

This vessel was made using a coil technique, where clay is rolled and then formed into spirals. This method allows the maker to build tall, thick-walled vessels in complex shapes.

Earthenware is clay which is fired at low temperature, leaving it coarse, and porous.

973



972



986



There are similar Jōmon flame pots in other museums, some with much more elaborate and extended swirling decoration. There are also lots of other Jōmon clay vessels and figures in the Sainsbury Collection (eg. 972, 973, 974, 975, 985, 986, 1091, 1187 +)

This vessel is thought to have been for ritual use, the soot-blackened top suggests it may have been a cooking pot.



What aspect of this vessel most interests you?

Have you got questions of your own?

Does this extra information change the way you see the Flame-style Deep Bowl?

Is there now even more you would like to explore?

Here are a few suggestions for further exploration:

“ In some examples the 'flames' are pierced and as high as the body of the pot itself, but in this fine and well preserved bowl the rim decoration is more restrained. It was formed by cutting and incising slabs of clay to form deep spirals and swirls. ”

Hooper, S. and SCVA (1997)  
Catalogue to the Robert and Lisa  
Sainsbury Collection, Vol.3:  
Precolumbian, Asian, Egyptian  
and European antiquities.  
New Haven: Yale University Press  
in association with UEA.



Sainsbury Centre online catalogue:

<https://www.sainsburycentre.ac.uk/art-and-objects/1081-flame-style-deep-bowl/>

Find out more about Earthenware on Wikipedia:

<https://en.wikipedia.org/wiki/Earthenware?wprov=sfti1>

Or on the online Encyclopaedia Britannica:

<https://www.britannica.com/art/earthenware>

There is a lot of information about  
Flame-style Deep Pots on this  
Japan Heritage site:

<https://www.kaen-heritage.com/english/about/>

Photos P2  
Google images  
Photo P3  
japanhouse.jp  
Maps P3  
Google maps.  
Photo P4  
Freepik  
other photos:  
Pete Huggins



Make coil pots in clay or plasticine.  
Roll the material into long lengths, and start spiralling.  
- Firstly try testing the strength by making a coil pot as high as you can go. Maybe have a competition? Document the process with photos or film. Perhaps make an animation.

- Can you change the diameter and flare it out at the top?
- At what point does it collapse?
- Why do you think it fell?
- Learning from that, have another go.
- How can you keep it strong?



Do you want your vessel to be a regular symmetrical shape? Or lop-sided?

- Is one more stable than the other?
- You could try making one upside-down, around a form too.
- When you are happy with your form, blend the coils together and smooth.
- What surface texture are you after?

# SAINSBURY CENTRE

## ACTIVITIES:

## DRAW



Can you draw the flame bowl?

- Use your pencil in different ways
- Try it upright and also try it with the lead on it's side too for different textures.

- You could make rubbings from a variety of surfaces.



- You could even draw into thick card. Press very hard then take a rubbing from that using crayons or graphite sticks for swirls and patterns to add to the collage



- Cut and collage them together to make your version of this vessel.

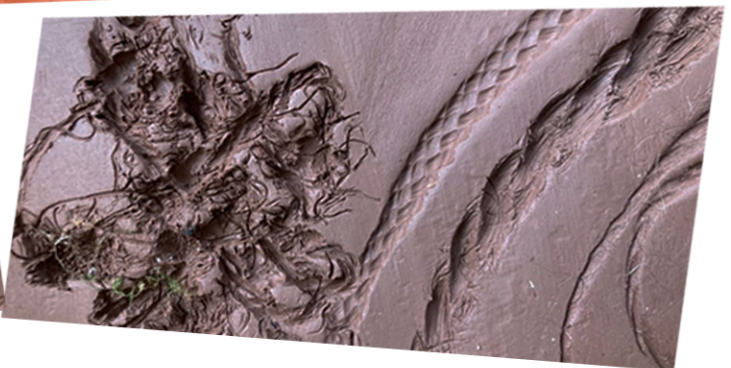




- Make small clay or plasticine tiles and experiment with pressing a variety of rope, wool and string in to make patterns.
- Look closely at the pot and zoom in. Try making textures using thick slabs of clay and plasticine as well as cutting or carving in.



What tools could you use... the end of a paintbrush, a blunt knife, a stick? What do you think might have made these marks 16,000 years ago?



Have these activities changed the way you think about the Flame-style deep bowl?