

this is one of a
series of resources
looking at different
vessels in the
Sainsbury Centre's
Collections

VESSELS



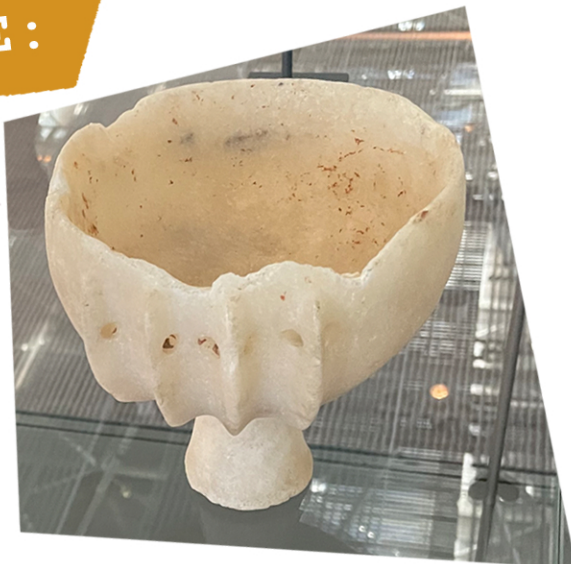
Goblet
with Lugs

INVESTIGATE:

LOOKING

Start by taking a good look at this vessel.
Try to think about it before you read the information about it.

What do you see?



Maybe use these questions to guide you:

- What do you think it is made from?
- How do you think it was made?
Could it have been moulded? Or carved?
- How would you describe the shape?
- Why do you think it has holes in?
- How would you hold it?

How heavy do you think it is?

- What do you think it was made for?
- How old would you guess it is?
- How many words can you think of to describe it?

THINKING

DISCUSSING



Perhaps answer these questions (above) or ask your own.

Do this individually, in pairs or groups.

How did you find this?

Do you agree with other people?
What are you most interested in?

What else do you need or want to know?

SAINSBURY CENTRE

IMAGINE:



Maybe use these questions to guide you:

Can you imagine how the goblet would look with a bright light shining through it?

- Who do you think made this?
- what material do you think it is made from?
- What would you use it for?

- What natural things does it make you think of?
Shells...? Waves...?
Trees covered in snow...?

- What material does it remind you of?
Sugar...snow...crystal.?



- Can you imagine a special event this was made for?
What might the other objects on the table look like?
What would have been on the menu?
Who were the guests?

- What would you like to drink from this?

Each object in the gallery has a label with some Facts and Figures. Labels highlight what we know, and what we do not.



Goblet with Lugs - this is the Title or Description of the object.

Greece, Cyclades - The Production Place is where the object was made, in as much detail as possible.

Early Cycladic I 3200-280 BCE - this is name of the Historic Period when it was made.

Marble - the Material the object was made from, perhaps suggesting how it was made too.

Acquired by the Sainsbury Family in 1966.

Donated, 1973 - the date that this vessel was given to, or bought by, the UEA.

UEA 356 - all of the objects in the Sainsbury Centre's collections are given an **Accession Number**.

This allows us to keep records about each of them, and helps you to find out more about them online:

<https://www.sainsburycentre.ac.uk/art-and-objects/>

Each of the objects in this resource have their number near them.



356

SAINSBURY CENTRE

ILLUMINATE:

The Facts and Figures have some of the answers, but there is more to think about and understand.



Goblet with lugs comes from Paros, one of the many islands of Greece called The Cyclades.

This vessel is around 5000 years old, and has been skilfully carved from white translucent local marble.

At the Sainsbury Centre, the goblet is displayed with some of the small white figures for which Cycladic culture is famous.

The goblet is the same age and made of the same material as the figures, which are thought to have been looted from tombs in the mid 20th Century



The goblet's four distinctive carved ridges, or lugs, may have been shaped for fingers. A strap may have been threaded through the holes to help the cup be held more securely.

How does this extra information change the way you see the Goblet with lugs?

What aspect of this vessel most interests you? Have you got questions of your own?



SAINSBURY CENTRE

FIND OUT MORE

Is there now even more you would like to explore?

Here are a few suggestions for further exploration:



Sainsbury Centre online catalogue:

<https://www.sainsburycentre.ac.uk/art-and-objects/356-goblet-with-lugs/>

Connected - cycladic figures:

https://en.wikipedia.org/wiki/Cycladic_art

Hooper, S. and Sainsbury Centre for Visual Arts (1997)
Catalogue to the Robert and Lisa Sainsbury Collection,
New Haven: Yale University Press
in association with University of East Anglia.

Words that may be new to you:

goblet - a drinking glass with a foot and a stem
moulded - made or shaped in a mould
carved - a hard material cut to produce an object

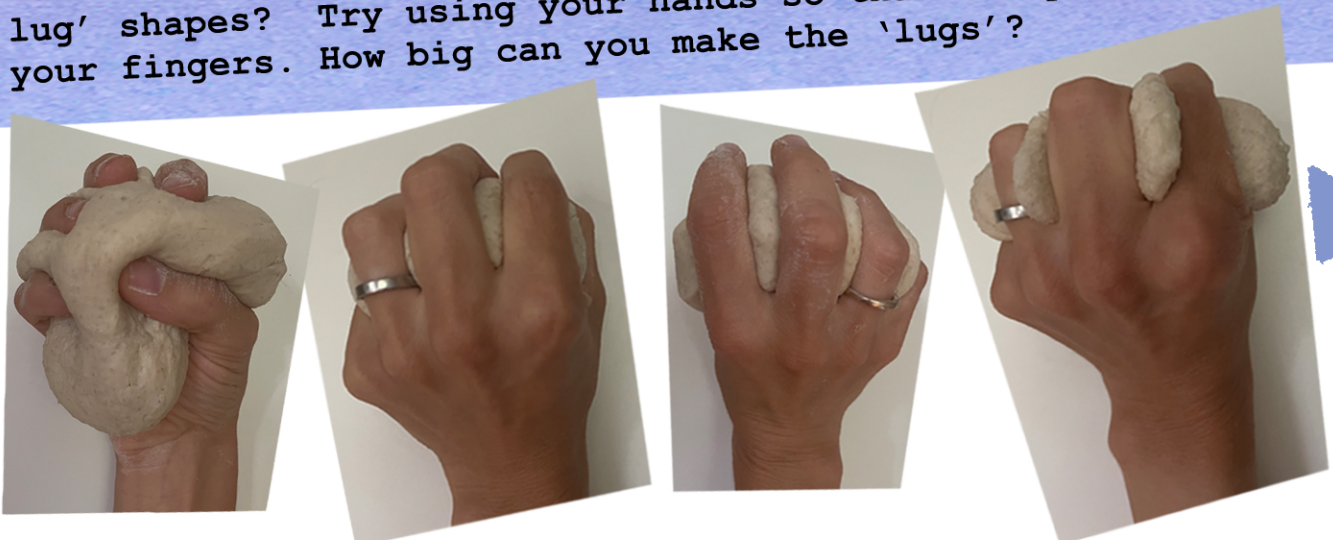
Photos:
Pete
Huggins



Draw the goblet shape, with glue, on black paper. Can you use delicate white tissue paper to re-create the pale gentle form of the goblet and carefully build up the lugs by raising the tissue?



What different types of materials could you use to squish into 'lug' shapes? Try using your hands so that it spreads through your fingers. How big can you make the 'lugs'?



Can you experiment using absorbant discs of paper or thin fabric?

Soak them in water, form them over something curved (a deodorant bottle lid for example!)

Freeze it into position.

This would be fun outdoor play in the winter.

Leave them to freeze over night.
Can you use a support to make them into delicate and beautiful iced goblets before they melt?



Can you fill a small round bowl with water and freeze it? Keep warming your fingers in warm water. Grip the ice in the same place, as it melts. Can you create 'lug' shapes, like the Goblet has?



ACTIVITIES:

CONSTRUCT

- Using egg shells, can you make a delicate goblet?
- Can you very carefully alter the edge of the egg shell to make it just how you want it?

- You can add 'lugs' or other simple decoration by drawing on the egg shell too.
- How gentle do you have to be?



Try constructing mini Goblets from some of the materials you imagined when you read page 3. Why are shells good for this?

