

Can your school help the animals in the Sainsbury Collection to escape from the gallery?



There are now over 60 'digital twins' of objects in the Sainsbury Collection, which you can access in the free-to-use web-based platform SketchFab.

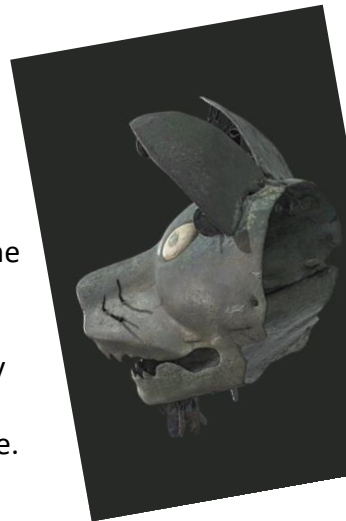
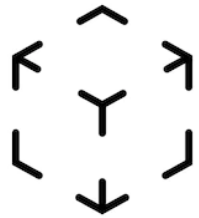
<https://sketchfab.com/sainsbury-centre/models>

See the objects as you have never seen them before - in incredible detail, and from every angle.

Access SketchFab on an iPhone or iPad (and some android devices) to use the [AR] Augmented Reality feature to bring the objects into your space – your classroom, playground or home.

This summer the Sainsbury Centre is inviting you to transport an animal from the collection into a new environment.

There are representations of animals from all around the world in the Sainsbury Collection. You can see hippos, llamas, baboons, bears, frogs... and so many more. Lots of the animals can be found here in this country as well as elsewhere.



The Wild Escape are encouraging you to choose a UK-based animal, and to make a new habitat for it to visit.

You might like to re-create the place where the animal would normally live, or create a fantastical landscape for it to explore. Work in 2D or 3D and in any material.

To enquire about taking part or to send in your photos of the Sainsbury Collection animals on their travels, please email: becca.sturgess@uea.ac.uk

To find out more about how Primary Schools can enter The Wild Escape national competition visit: <https://thewildescape.org.uk/>